

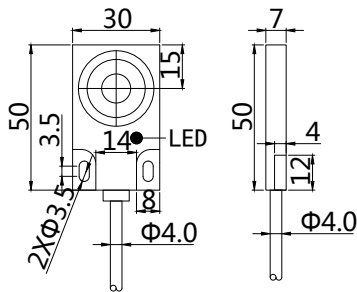


Features:

- Q30 Plastic housing;
- 6/10mm , flush/non-flush mountable;
- DC 3-wire , switching output;
- Cable



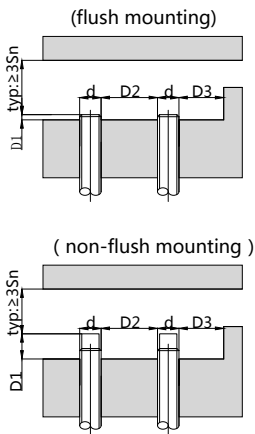
Dimensioned drawing



Model No.

Sensing range	Sn:2-6 mm	Sn:2-10 mm
NPN N. O	SCF-Q30-06N-P11-PV2	SCN-Q30-10N-P11-PV2
NPN N. C	SCF-Q30-06N-P21-PV2	SCN-Q30-10N-P21-PV2
PNP N. O	SCF-Q30-06P-P11-PV2	SCN-Q30-10P-P11-PV2
PNP N. C	SCF-Q30-06P-P21-PV2	SCN-Q30-10P-P21-PV2

Mounting



Correction Factor	
Material	Factor
Non-ferrous metal	1
Water	1
Alcohol	0.7
Ceramic	0.6
Glass	0.5
Oil	0.3

Technical data

Electrical data	Operating voltage	10-30V DC
	Switching frequency	100Hz
	Voltage drop	≤2.0V
	Leakage current	<0.01mA
	Load current	200mA
	No load current	≤10mA(24V)
	Hysteresis	<15%(Sr)
	Repeatability	<5.0%(Sr)
	Temperature drift	<10%(Sr)
	Short circuit protection	Yes
Overload protection	Yes	
Polarity reversal protection	Yes	
Environment	Ambient temperature	-25...70°C
	Ingress protection	IP67
Mechanical data	Housing material	PBT
	Face material	PBT
Electrical connection	Connectors	PVC cable/2m ; 3*0.25mm ²

Wiring

